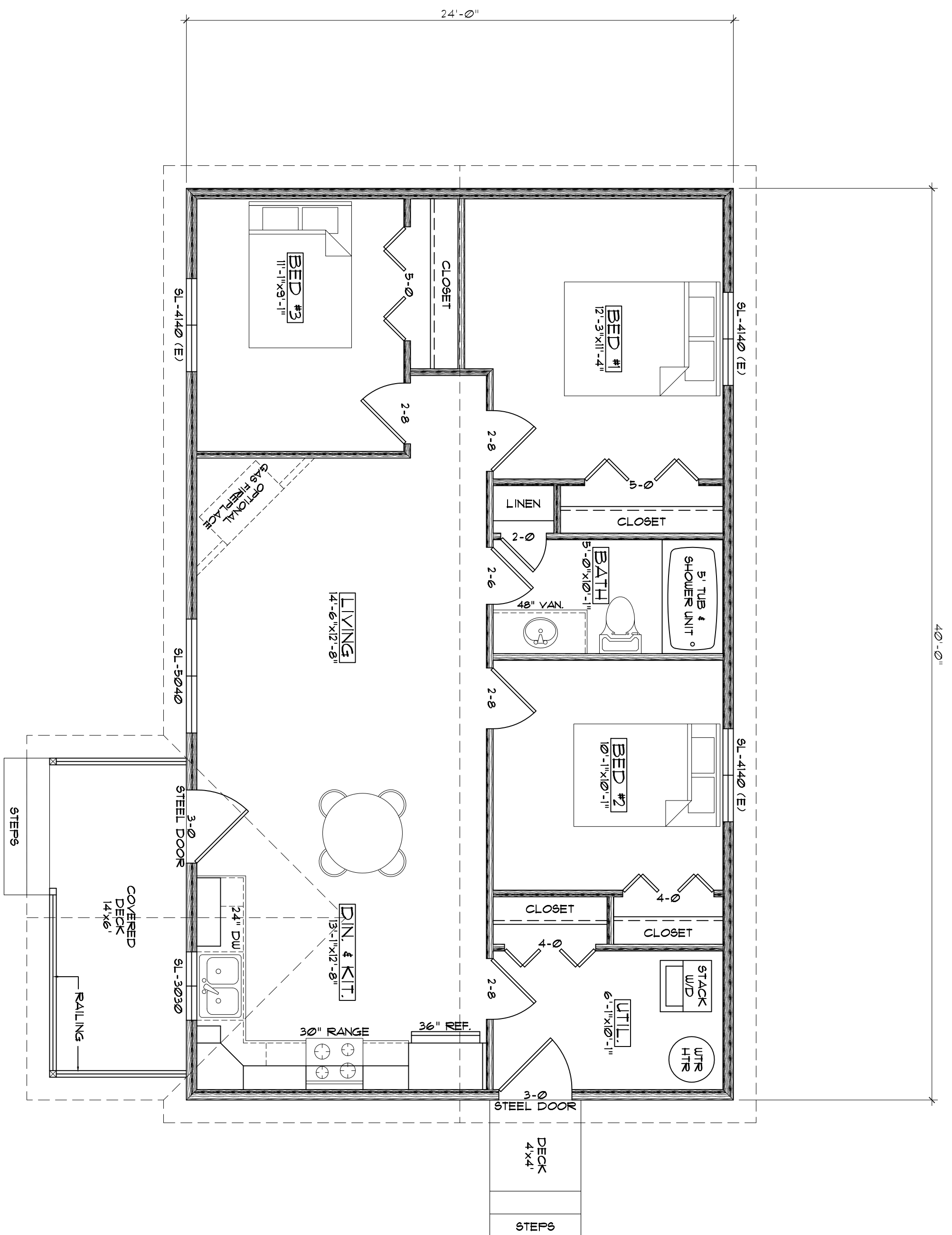


FRONT ELEVATION

SCALE: 1/4" = 1'-0"



FLOOR PLAN

SCALE: 1/4" = 1'-0"

PLANS ARE PROPERTY OF L. DAN FRENCH BUILDERS, LLC AND MAY NOT BE USED, COPIED, OR BUILT FROM WITHOUT THE WRITTEN PERMISSION OF L. DAN FRENCH BUILDERS, LLC.

A-10	Sheet	Project Number: 1-17-32B	L. Dan French, Builders, L.L.C. Billings Model Home	Date: 5-18-17 5-24-17	Square Footages	L. Dan French Builders, LLC 134 N. Silverleaf St. Gladwin, MI 48624 Phone: (983) 426-1348 Email: dfrench@danfrenchbuilders.com	INTELLIGENT DESIGN, L.L.C. 695 South Loxley Road Houghton Lake, MI 48629 Phone: (983) 422-4900 Fax: (983) 422-4901
					Lower =		
					Upper =		
					Total = 360		